

INTRODUCING: ARTSCIENCE MUSEUM



CONFIDENTIALITY

The information provided in this document is confidential and may only be used for the sole purpose of the proposed exhibition.

Marina Bay Sands Pte Ltd may, at its discretion and without notice, change or replace any of the exhibitions listed in this deck.

This document and its contents may not be used, published or redistributed without the prior written consent of Marina Bay Sands Pte Ltd.



ArtScience Museum is an iconic cultural landmark in Singapore. Our mission is to explore where art, science, culture and technology come together.



It is here at this intersection of the disciplines that we believe the future is created.

ARTSCIENCE MUSEUM: STRENGTHS

Quality Content and Programming:

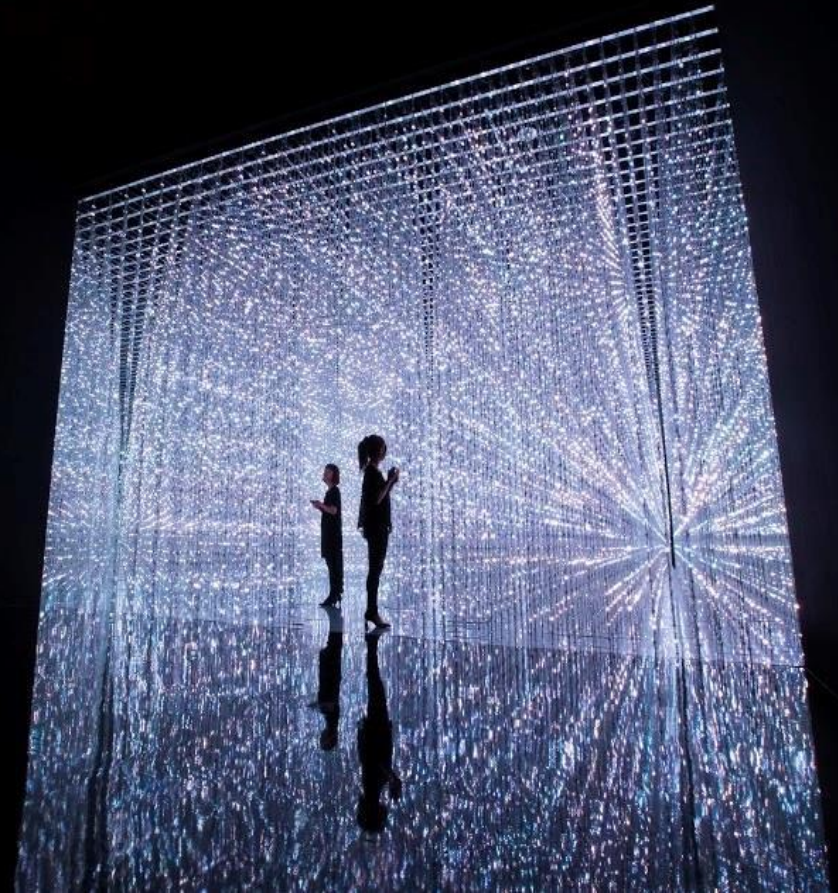
Constantly voted as one of the Top Museums in South East Asia

Wide range of exciting topics:

The best of the arts and sciences, with around 7 major exhibitions and over 100 events and programmes each a year

Cutting edge innovations:

Our permanent exhibition, *Future World*, touring exhibitions, locally curated exhibitions and showcases with leading research institutes and universities



ARTSCIENCE MUSEUM: ASIA PACIFIC'S FIRST LEED® GOLD CERTIFIED MUSEUM

Over the past five years, the museum has collaborated with like-minded partners to stage several exhibitions, programmes and educational activities that send a clear message about the urgency of taking action to address environmental threats such as climate change and biodiversity loss.

- Innovative events raising public awareness and advocating action to over 200,000 people: *Singapore Eco Film Festival* (2016-2018); *Into the Wild* (2017); *Season of Sustainability* (2019); *Skyscraper, The Bruges Whale* (2019)
- National Geographic collaboration with provocative *Planet or Plastic?* Exhibition (2020)
- Eco-Business partnership delivering *Changing Course*; a flagship climate change initiative (2019)



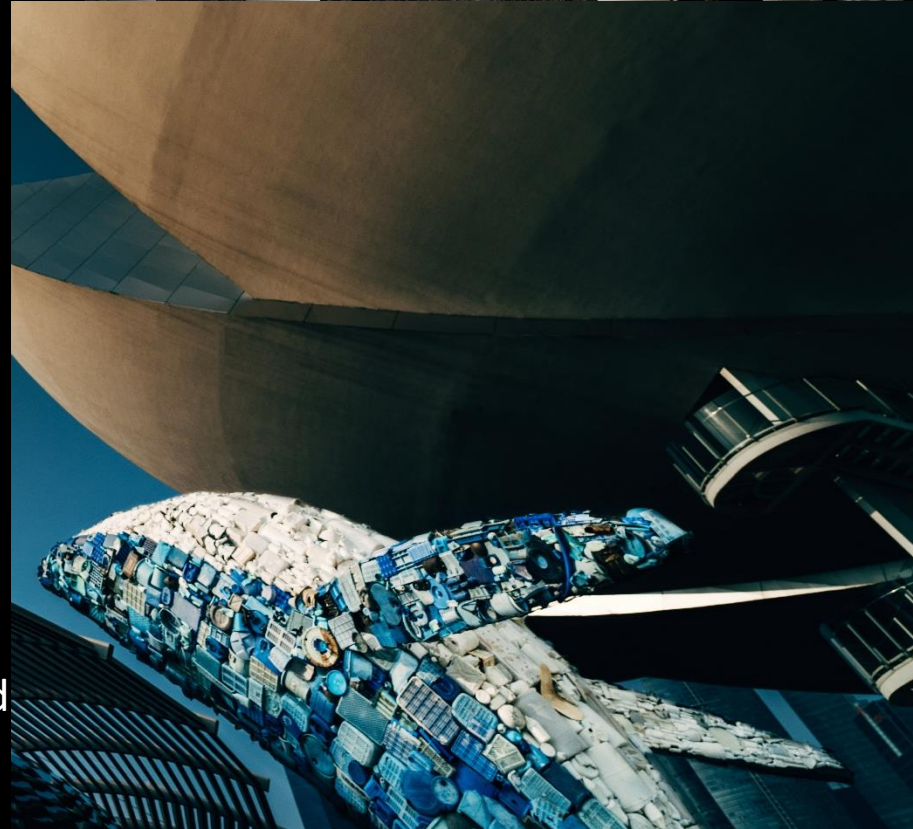
ARTSCIENCE MUSEUM: SUSTAINABILITY

Energy saving initiatives such as the use of LED lights and a programmable lighting system enable the museum to be **47 per cent more energy efficient** than similar rated buildings

Water efficiency achieved through the museum's Rain Oculus feature—nearly **1,400,000 litres of rainwater is recycled each year**. The water is reused for landscaping, water feature maintenance and toilet flushing

More than 50 per cent of the museum's office and cleaning supplies are certified sustainable

Over 50 per cent of all operational waste – such as paper, cardboard and plastics – being recycled



FUTURE WORLD: WHERE ART MEETS SCIENCE



Permanent: Basement 2 | Galleries 1 to 5

Future World, is our landmark permanent exhibition. It is a fully immersive 1500 square metre digital universe, where 19 spectacular art installations are brought to life and evolve in real-time through visitor presence and participation.

FUTURE WORLD: WHERE ART MEETS SCIENCE



It is created with teamLab, an award-winning Japanese collective of "ultra technologists" that includes artists, programmers, engineers, CG animators, mathematicians, architects and designers.

FUTURE WORLD: WHERE ART MEETS SCIENCE



Future World is organised into five themes: Nature, Town, Sanctuary, Park and Space, each of which uses cutting-edge science and technology to create ever-changing, evolving environments, which visitors of all ages are invited to explore, and become part of. Taken as a whole, *Future World* is a place where art, science and technology meet.

PRIVATE EVENTS & VENUE HIRE

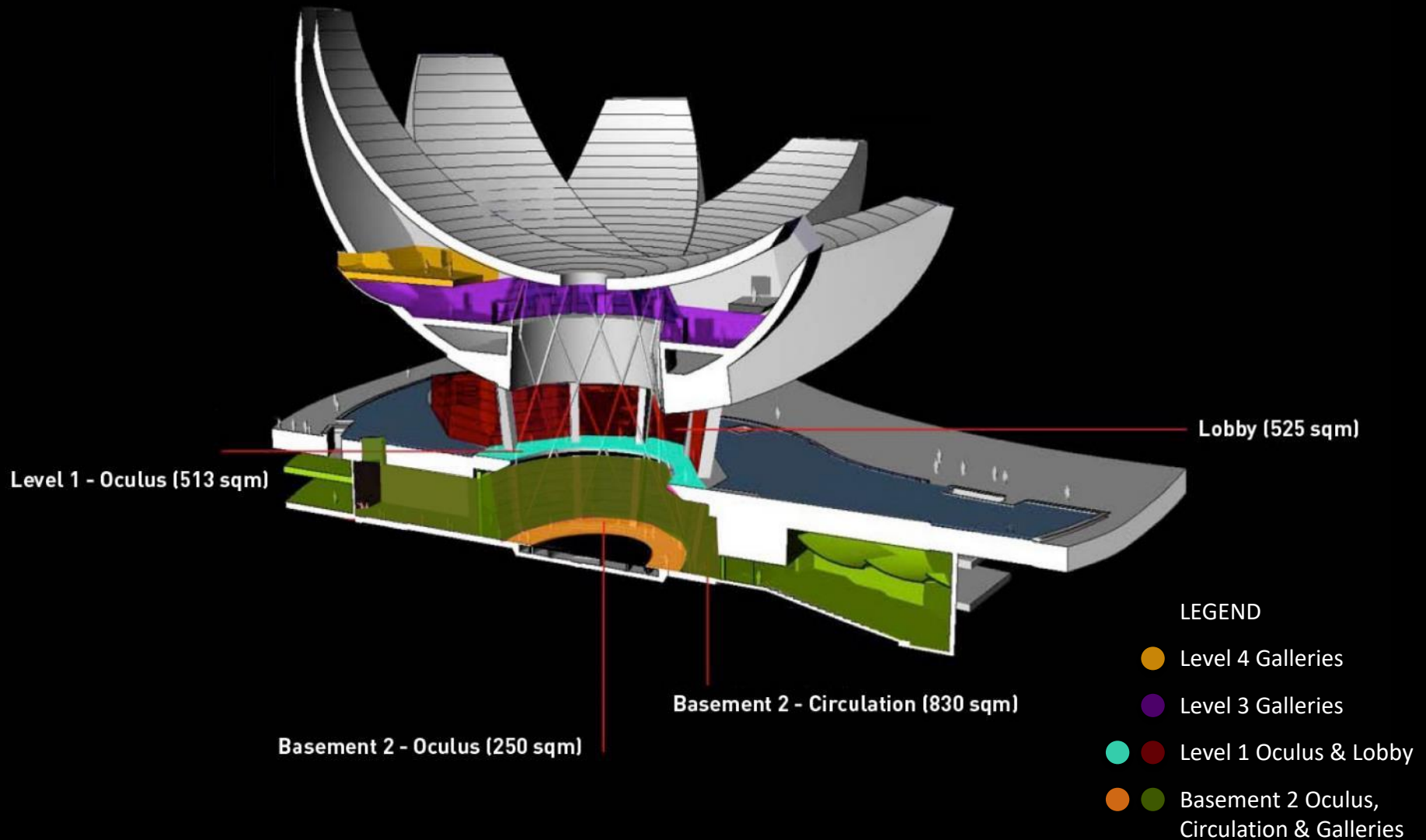
ArtScience Museum also hosts private events including conferences, product launches, cocktail receptions, book launches, parties, private exhibitions, and many other events.



THE SPACES

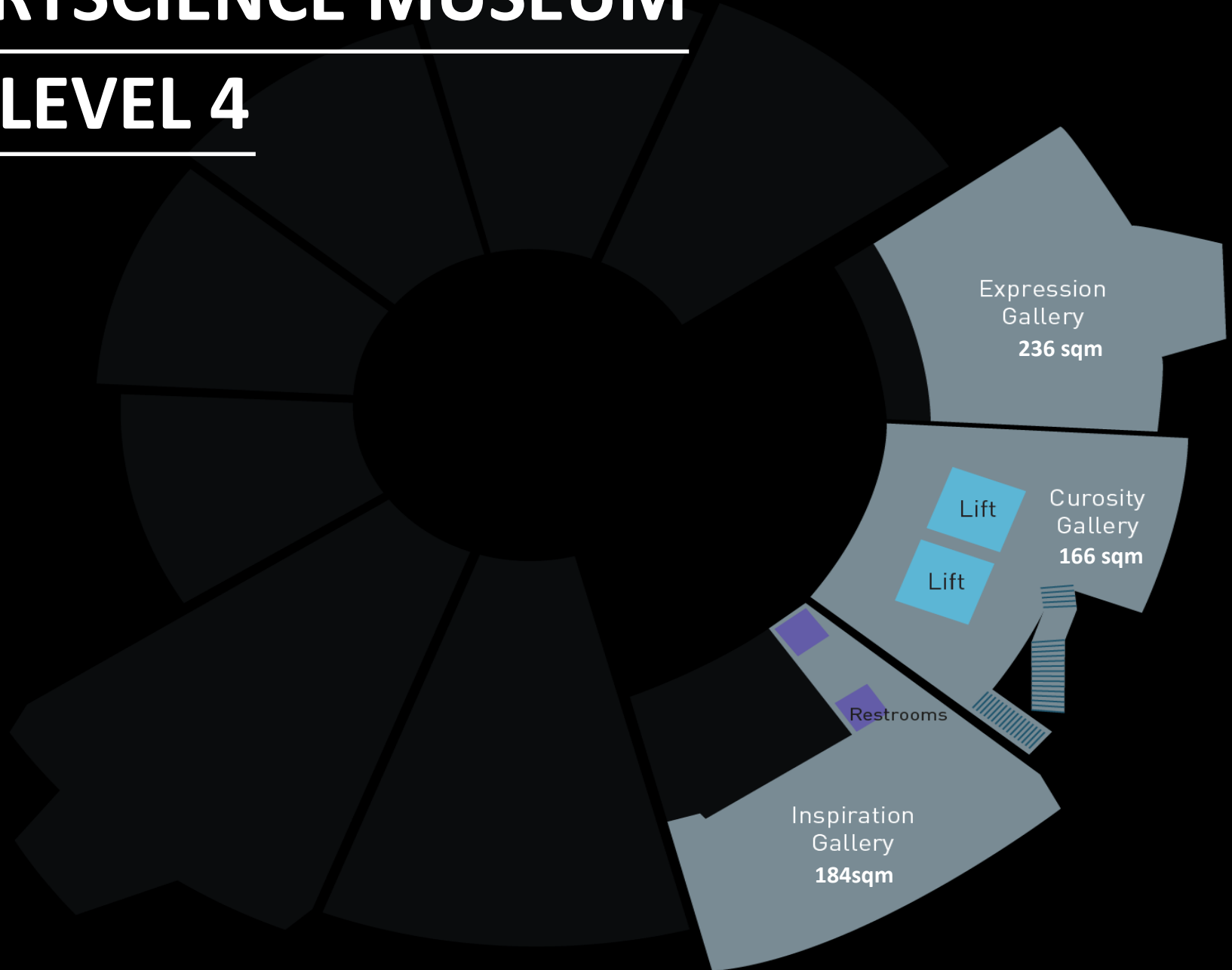


THE SPACES



ARTSCIENCE MUSEUM

– LEVEL 4



FENDI
ROMA



Level 4 (Expression Gallery)



Level 4 (Expression Gallery)



Google Cloud

Google Cloud
Thriving through innovation

Level 4 (Expression Gallery)



SONY

360 Spatial Sound | Acoustic Center Sync

360 Spatial Sound Experience. We see and do the same.



A new frontier of surround sound

A80K 55 65 77

SONY

With BRAVIA, SU



W830K 32



Level 4 (Expression Gallery)

Google TV

SONY

BRAVIA XR

4K
HDR



X95K
65 85



A80K
55 65 77



X85K
50 55 65 75 85



55 65 75 85





Agreement, the who, the why, the what and the how of the agreement. #M2020

Agreement, the who, the why, the what and the how of the agreement. #M2020

MILLENNIAL #M2020

"We need to be clear on... Many... #M2020"

"Transformation... #M2020"

"Agreement, the who, the why, the what and the how of the agreement. #M2020"

Agreement, the who, the why, the what and the how of the agreement. #M2020

accenture
MILLENNIAL 2020

Level 4 (Expression Gallery)



Level 4 (Expression Gallery with Cinema Seats)

WORLD OF FENDI



SELA
FENDI
FENDI
FENDI
FENDI

Level 4 (Curiosity Gallery)



Level 4 (Curiosity Gallery)



Level 4 (Curiosity Gallery)



Level 4 (Curiosity Gallery)



Level 4 (Inspiration Gallery)



salesforce

CONNECT TO YOUR CUSTOMERS
IN A WHOLE NEW WAY

Level 4 (Inspiration Gallery)



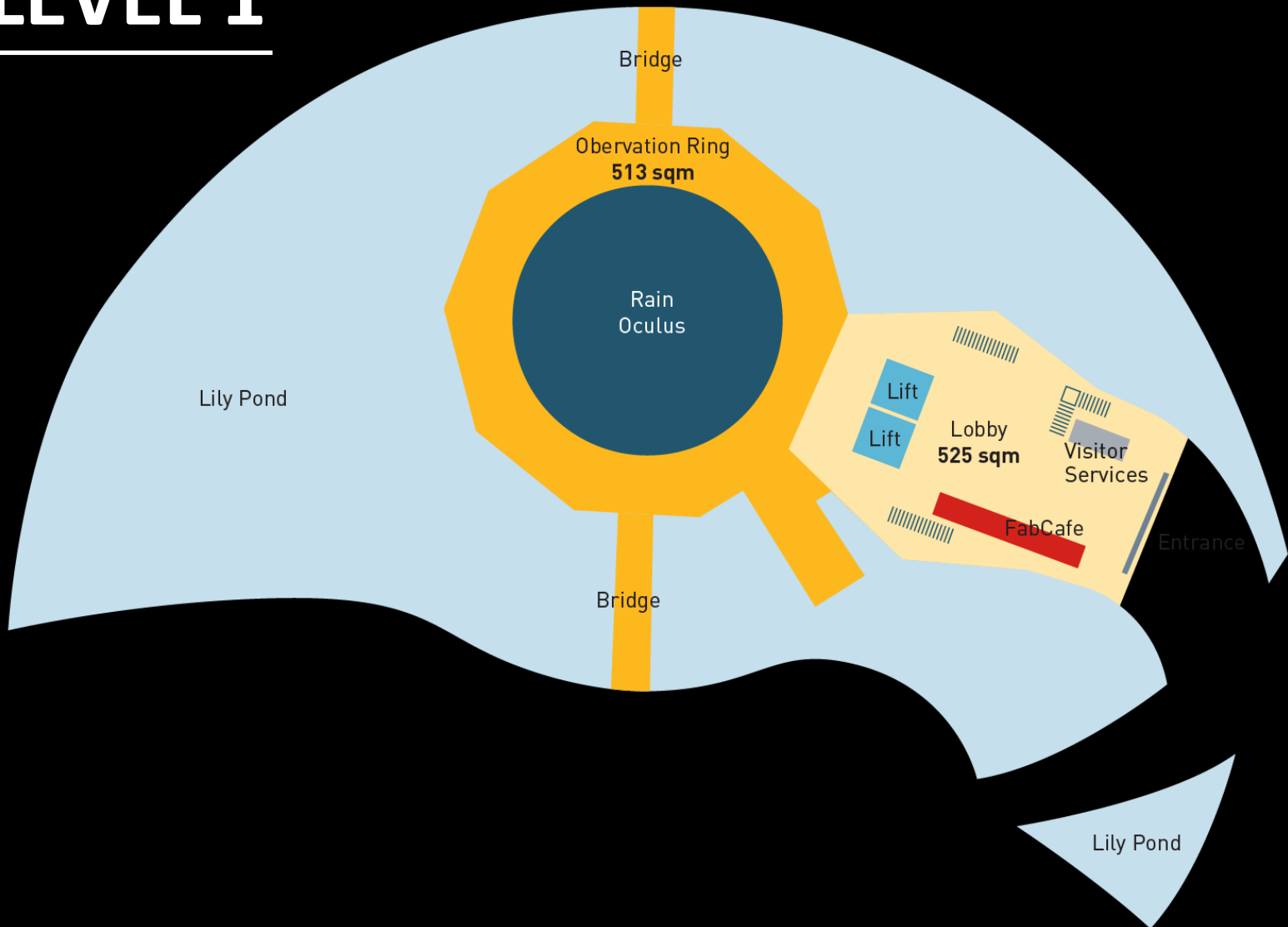
Level 4 (Inspiration Gallery)



Level 4 (with the current VR Gallery Setup)

ARTSCIENCE MUSEUM

– LEVEL 1





Level 1 (Lobby)



Level 1 (Lobby)



HOMEMADE
CAKES & TARTS
Freshly baked pastries by our staff daily.
Please order with our staff for delivery instructions.

Huawei Exclusive Customer
Appreciation Night 2022
13 May 2022, 19:00pm - 23:00pm
Johannes Museum Level 1, 6 Bayfront Ave, Singapore 018914

FRESHLY BAKED PASTRIES
MUFFIN OF THE DAY \$2.00
CROISSANT \$2.00
HAM & CHEESE CROISSANT \$2.00
BUN OF THE DAY \$2.00
BUNIC \$2.00

FRESH YOGHURT \$2
With fresh fruit
Toppings: Honey, Caramel, Vanilla

SMOOTHIES \$3
FRUIT & YOGHURT
FRUIT & MILK
FRUIT & BANANA
FRUIT & MANGO
FRUIT & PINEAPPLE
FRUIT & STRAWBERRY
FRUIT & VANILLA
FRUIT & YOGHURT
FRUIT & MILK
FRUIT & BANANA
FRUIT & MANGO
FRUIT & PINEAPPLE
FRUIT & STRAWBERRY
FRUIT & VANILLA

TEA & SPECIALS \$2
HOT TEA
HOT MILK
HOT COCOA
HOT CHOCOLATE
HOT VANILLA
HOT CARAMEL
HOT MANGO
HOT PINEAPPLE
HOT STRAWBERRY
HOT VANILLA
HOT CARAMEL
HOT MANGO
HOT PINEAPPLE
HOT STRAWBERRY

COFFEE \$2
ESPRESSO
AMERICANO
CAPPUCINO
LATTE
MOCHA
VANILLA
CARAMEL
MANGO
PINEAPPLE
STRAWBERRY
VANILLA
CARAMEL
MANGO
PINEAPPLE
STRAWBERRY

Huawei Exclusive Customer
Appreciation Night 2022
13 May 2022, 19:00pm - 23:00pm
Johannes Museum Level 1, 6 Bayfront Ave, Singapore 018914

Level 1 (Lobby)



xylem
Let's Solve Water

OFFICIAL WATER TECHNOLOGY PARTNER



xylem
Let's Solve Water

OFFICIAL WATER TECHNOLOGY PARTNER

xylem
Let's Solve Water



xylem
Let's Solve Water

xylem
Let's Solve Water



Level 1 (Lobby)



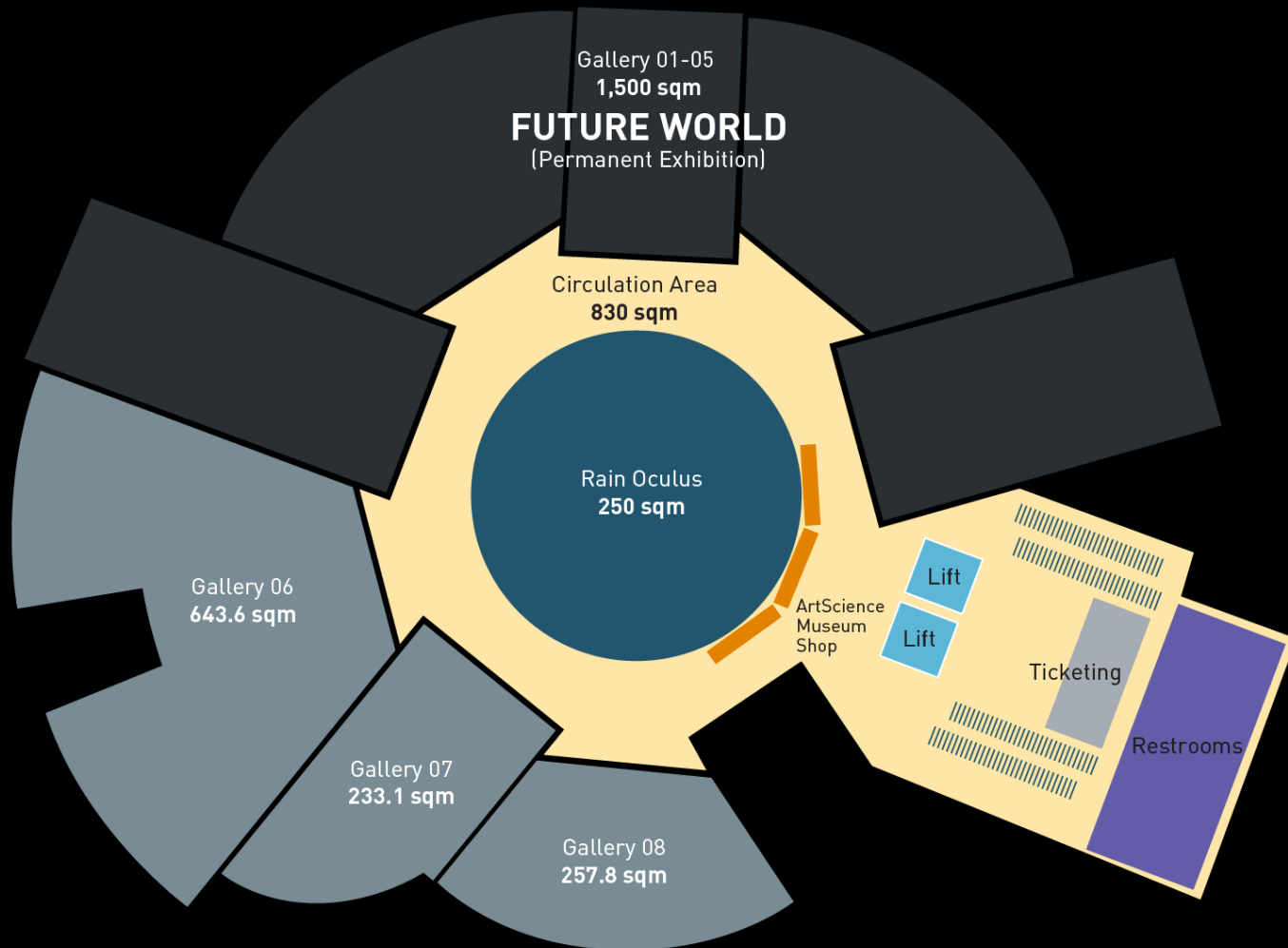
Level 1 (Oculus Exterior)



Level 1 (Oculus Exterior)

ARTSCIENCE MUSEUM

– BASEMENT 2





Basement 2 (Future World)



Basement 2 (Future World)

BARONCELLI
LADY
Day Night



MIDO®

SWISS WATCHES SINCE 19



Basement 2 (Future World)



Basement 2 (Future World)



Basement 2 (Future World)



Basement 2 (Future World)



Basement 2 (Circulation)



Basement 2 (Circulation)



Basement 2 (Oculus)



Basement 2 (Oculus)



Basement 2 (Oculus)



Basement 2 (Oculus)



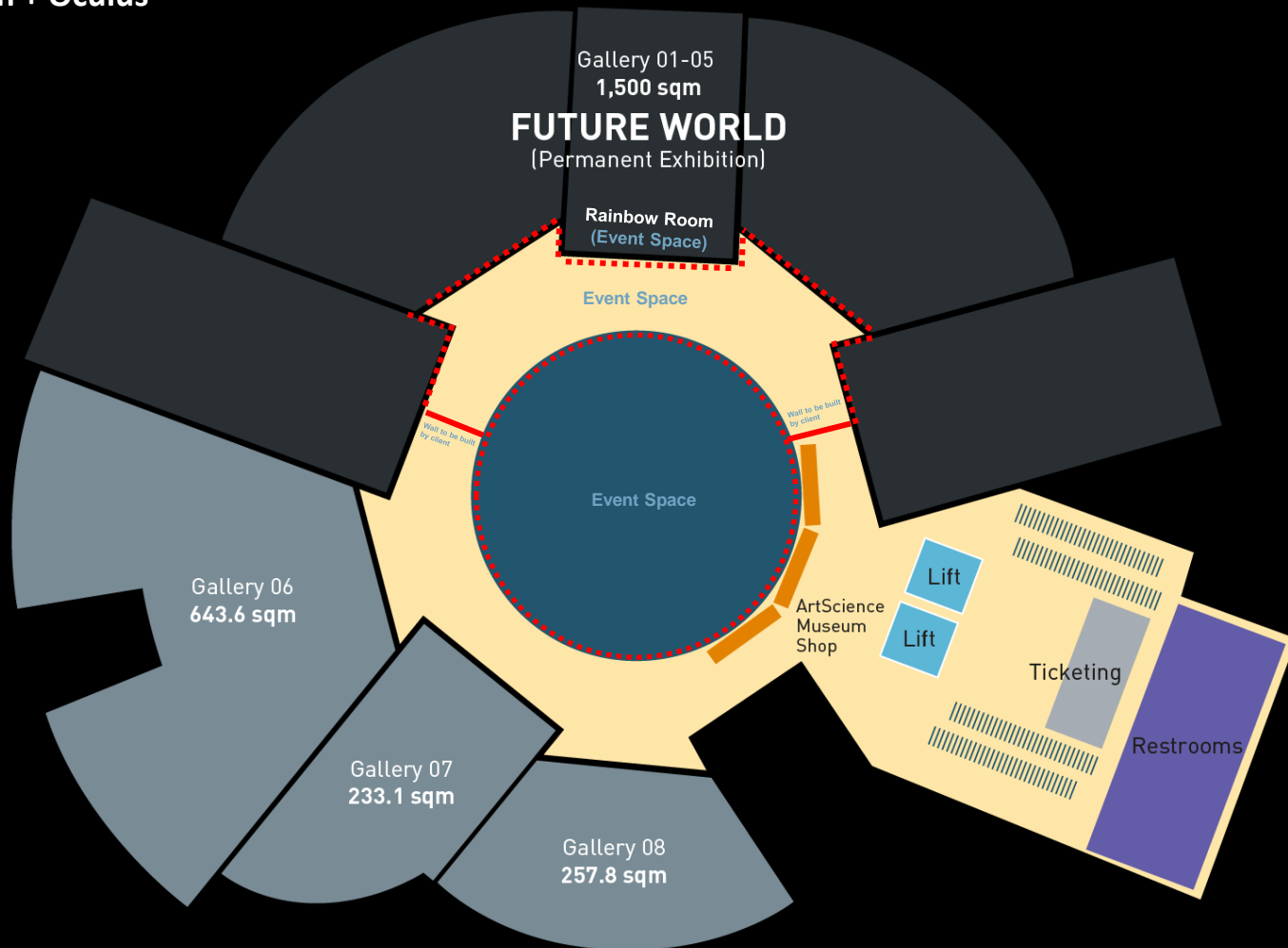
Basement 2 (Oculus)

ARTSCIENCE MUSEUM

– BASEMENT 2 Lite

Partial Circulation + Oculus

**Refer to area in red*





THE BALVENIE[®]
#THEMAKERSPROJECT

Basement 2 Lite (Rainbow Room)



THE BALVENIE[®]
#THEMAKERSPROJECT

Basement 2 Lite (Rainbow Room)



Basement 2 Lite (Circulation)



Basement 2 Lite (Circulation)

ARTSCIENCE MUSEUM VENUE RATES

All venue rentals in the museum includes entry into the exhibitions, up to the capacity of the venue booked

*Prices are subject to changes

*Note: Capacity based on pre COVID-19. Subject to changes according to safe distancing measures.

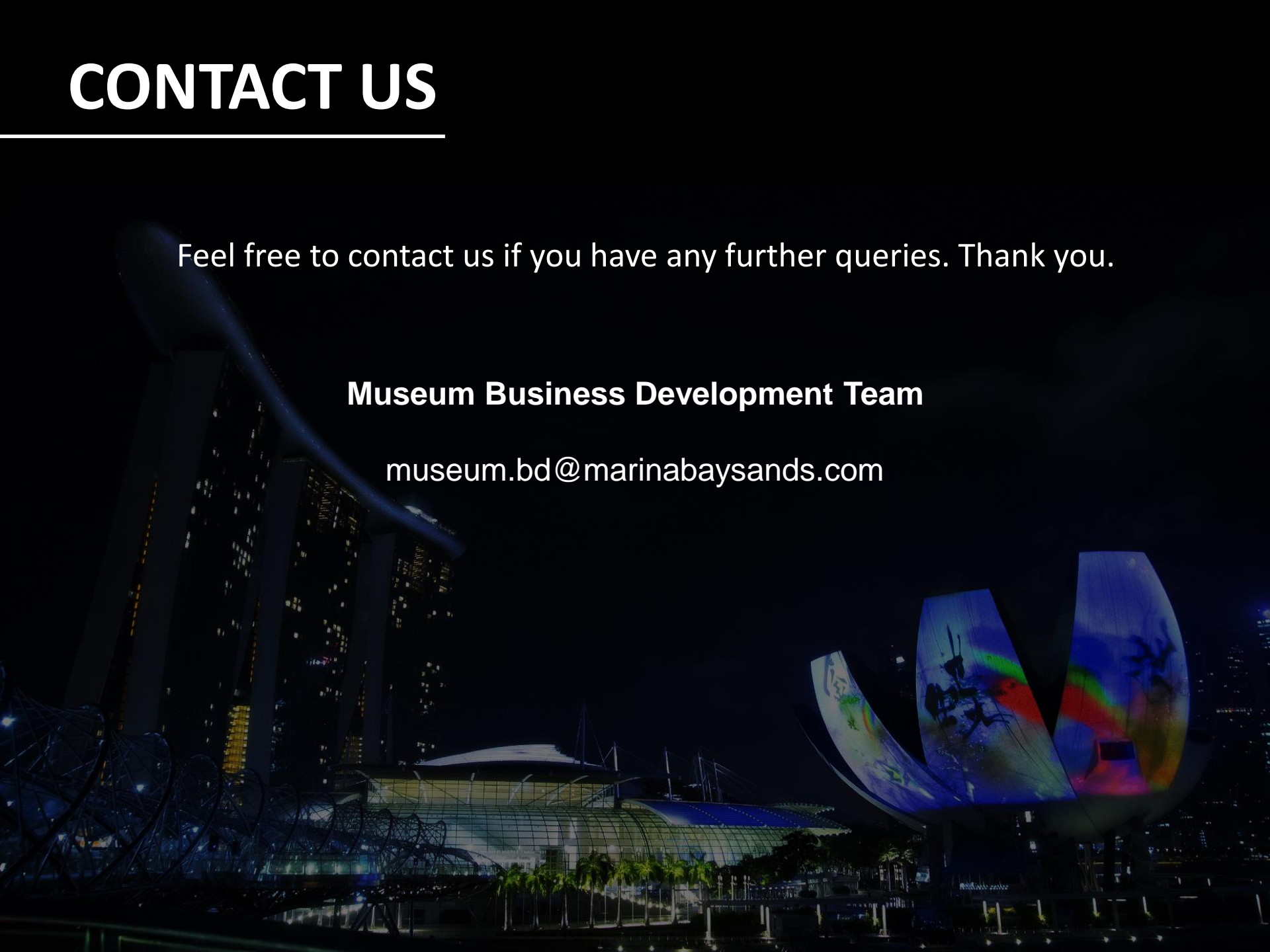
Venue	Cost	Area	Capacity
Level 4 Expression (with 65 cinema seats) and partial Curiosity Cost to remove cinema seats applies	Whole Day : \$10,000+	Expression: 236m ² Curiosity (shared): 83m ²	200+ standing pax (Expression: 158; Curiosity (shared): 56)
Level 1 Lobby	Whole Day : \$14,000+	525m²	190 standing pax
Basement 2 Circulation & Oculus	7pm to 11pm : \$12,000+	1080m²	500 standing pax
Basement 2 Lite Partial Circulation & Oculus Bonus: Additional Rainbow Room for B2 venue rental till early Sep'22, subjected to availability	Whole Day : \$10,000+	540m²	200 - 250 standing pax
Bookings of L3 Exhibitions	7pm to 11pm : \$8,000+	1500m²	350 - 400 standing pax
Bookings of B2 Exhibitions Future World or other B2 exhibition	7pm to 11pm : \$12,000+	1,200 - 1500m² (Exhibition Space) 300 - 500m² (Circulation outside Galleries)	500 - 600 standing pax

CONTACT US

Feel free to contact us if you have any further queries. Thank you.

Museum Business Development Team

museum.bd@marinabaysands.com





THANK YOU
